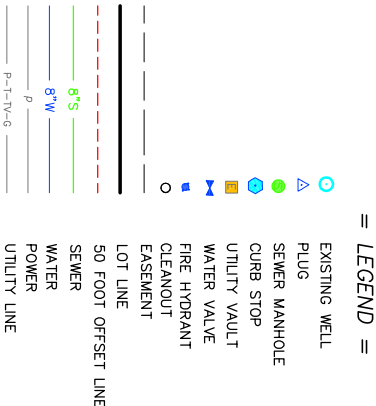


VICINITY MAP
SCALE: 1"= 1000'

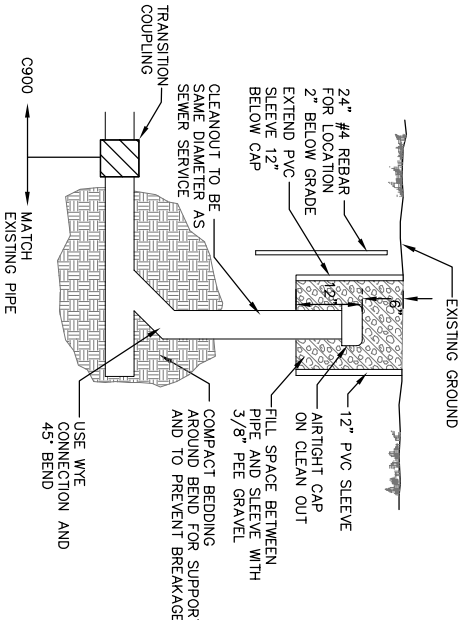
CONSTRUCTION NOTES

1. FLUSH SERVICE LINE CLEAN PRIOR TO ANY WORK COMMENCING.
2. EXPOSE CONNECTION ENDS TO CALCULATE GRADE. REPLACE NEW LINE AT SIMILAR GRADE. EXISTING SERVICE PIPING TO BE REMOVED AND REPLACED.
3. ANY FLEXIBLE COUPLINGS TO BE INCASED IN FLOW FILL OR USE HARDO TRANSITION COUPLINGS.
4. CLEANOUT CONSTRUCTION TO ALLOW FOR FUTURE PRESSURE TESTING WITH 4" TEST BALL AT EACH END. NEW SECTION OF LINE SHALL BE TESTED AT 3.5 PSI AIR PRESSURE FOR 2 (TWO) MINUTES WITH LESS THAN 1 PSI LOSS. AFTER INSTALLATION, CHECK TESTING APPARATUS IN CLEANOUT.
5. 3" WIDE STANDARD WARNING TAPE WITH GREEN "CAUTION BURIED SEWER LINE" SHALL BE INSTALLED 6" TO 12" ABOVE THE PIPE TO DISTINGUISH THE C900 PIPE FROM WATER LINE PIPING.
6. BORED UTILITIES
 - 6.1 CONTRACTOR SHALL VERIFY LOCATION OF ALL BORED AND OVERHEAD UTILITIES PRIOR TO ANY WORK ON THE PROPERTY. ALL UTILITIES SHALL BE LOCATED AND TESTED. THE LOCATION OF ALL UTILITIES SHALL BE APPROXIMATE AND BASED ON THE BEST INFORMATION AVAILABLE TO THE ENGINEER. ENGINEER DOES NOT WARRANT THE ACCURACY FOR COMPLETENESS OF THE INFORMATION SHOWN FOR EXISTING UTILITIES.
 - 6.2 CONTRACTOR SHALL COORDINATE WITH UTILITY COMPANIES PRIOR TO INSTALLING IMPROVEMENTS. ONE CALL WYOMING 1-800-348-1030
 - 6.3 PRIVATE UNDERGROUND UTILITIES EXIST IN THE PROJECT AREA. CONTACT PRIVATE LOCATOR TO LOCATE EXISTING WATER LINES AND BURIED POWER ASSOCIATED WITH THE WELLS.
7. EXISTING PIPING FROM MANHOLE TO PROPERTY LINE ASSUMED TO BE SDR 35 PVC. EXISTING PIPING FROM HOUSE TO PROPERTY LINE ASSUMED TO BE SCH40 PVC. VERIFY IN THE FIELD.
8. WATER AND SEWER INSTALLATION SHALL BE IN ACCORDANCE WITH CURRENT WYOMING DEPARTMENT OF ENVIRONMENT QUALITY, WATER DIVISION RULES AND REGULATIONS, WATER QUALITY PUBLIC WORKS STANDARD SPECIFICATIONS, 2001 EDITION.
9. TYPE A TRENCH BACKFILL SHALL APPLY TO ALL PAVED SURFACES AND AROUND ALL APPURTENANCES INCLUDING VALVES, FIRE HYDRANTS, AND MANHOLES. TYPE B TRENCH BACKFILL SHALL APPLY TO NON-TRAVELED AREAS. SEE SPECIFICATION WPSS 02225.
10. CONTINUOUS RIGID TYPE B PIPELINE INSULATION SHALL BE PROVIDED AT ALL LOCATIONS WHERE DEPTH OF COVER IS LESS THAN 5 FEET FOR SEWER MAINS AND SERVICES. LESS THAN 7 FEET FOR SEWER FORCE MAINS. WATER

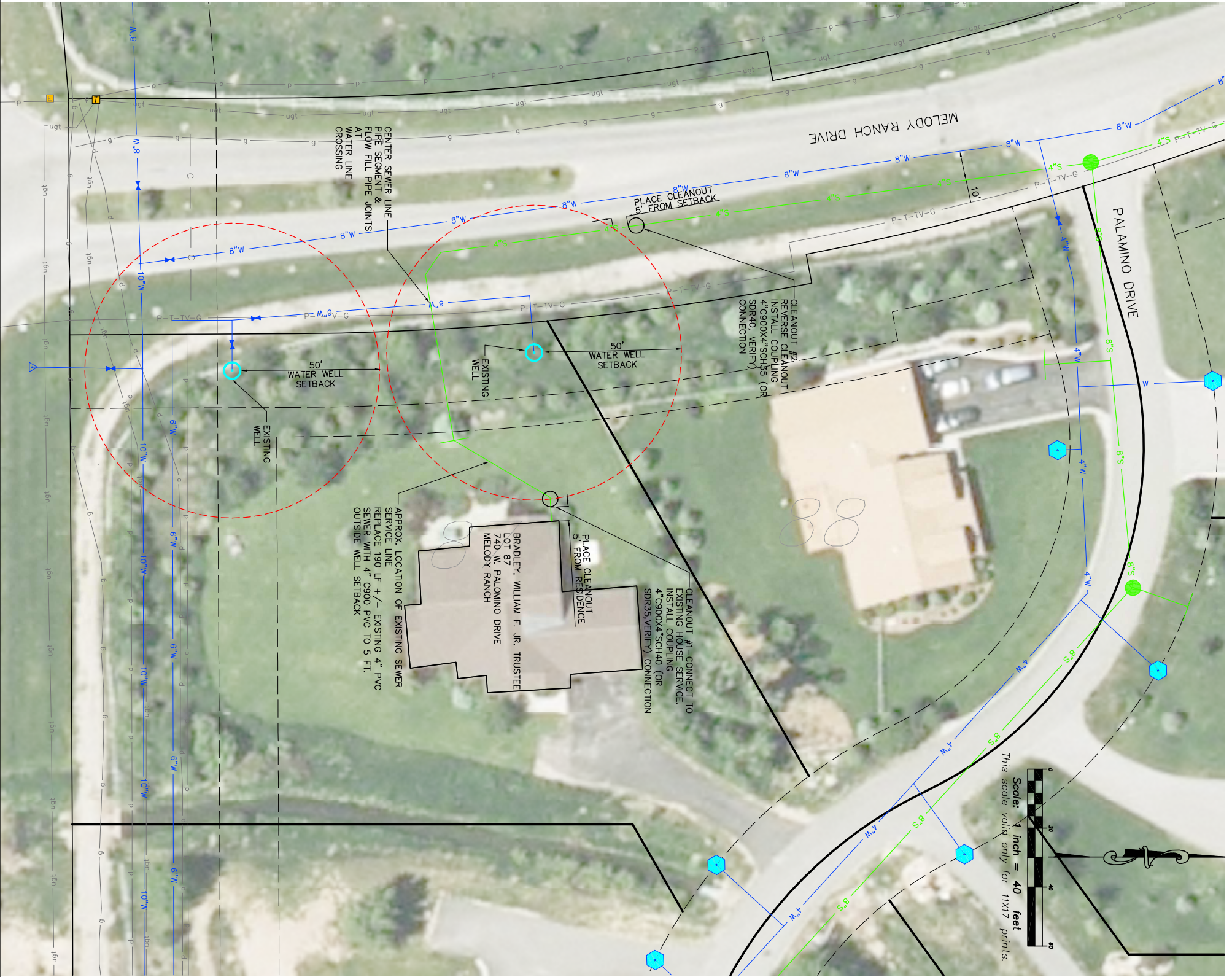


CONSTRUCTION NOTES CONTINUED

11. MAINTAIN A MINIMUM OF 10 FEET HORIZONTAL SEPARATION BETWEEN WATER PIPES AND SEWER PIPES/MANHOLES. MEASURED EDGE TO EDGE. MAINTAIN A MINIMUM OF 18 INCHES VERTICAL SEPARATION AT WATER-SEWER PIPE CROSSINGS. WHERE SEWER PIPE CROSSES ABOVE WATER PIPE, SPECIAL CONSTRUCTION IS REQUIRED.
12. CONTRACTOR SHALL CHECK CONDITION OF EACH LENGTH OF PIPE AND INSURE A CONSISTENT GRADE WITH NO BELLES OR LOW SPOTS IN THE LINE.
13. OWNER AND CONTRACTOR SHALL COORDINATE WORK WITH HOMEOWNER.



CLEANOUT
NO SCALE



PLAN VERSION	DATE	DRAFTER	APPROVED
EXHIBIT	11-05-2010	SP	TK

PROJECT TITLE: LOT 87 MELODY RANCH 740 W. PALOMINO DR. TETON COUNTY, WY	SHEET TITLE: SEWER SERVICE LINE RECONSTRUCTION EXHIBIT	PROJECT NUMBER 00085.27.26	SHEET 1
---	--	-------------------------------	------------

JORGENSEN ASSOCIATES, P.C.
Engineering • Land Surveying • Planning
P.O. Box 9550, 270 East Simpson Ave., Jackson, Wyoming 83002
(307) 733-5150 FAX (307) 733-5187
E-mail: ja@jorgensenassociates.com